

August 12, 2016

Gilbane Construction Update

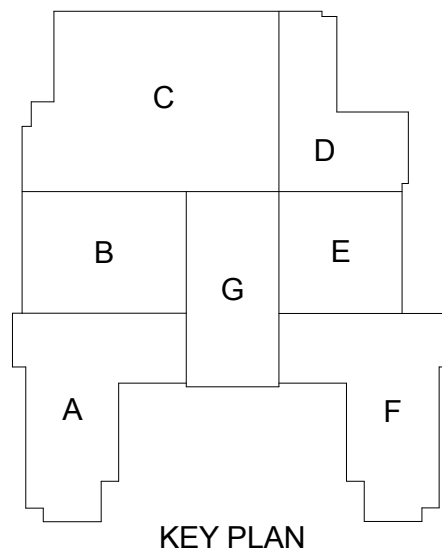
Activities in progress as of August 12, 2016:

- ▶ Courtyard window replacement started
- ▶ Art level interior stud framing started
- ▶ Spray foam on Area F east elevation in progress
- ▶ Masonry veneer in Area A west & Area F east elevation in progress
- ▶ Interior masonry in Areas C & D Cedar Level in progress
- ▶ Roof decking in Area D installation in progress
- ▶ Auditorium demolition complete
- ▶ Exterior studs in Area D north elevation in progress
- ▶ Interior stud wall framing on Cedar, 2nd & 3rd Level Areas A, F & G in progress
- ▶ HVAC duct & piping 2nd & 3rd Level Areas A, F & G & 4th Floor Area G in progress
- ▶ Electrical overhead rough-in on 3rd & 2nd Level Areas A, F & G in progress
- ▶ Temporary lighting Areas C & D Washington Level in progress
- ▶ Slab-on-grade poured in Area C
- ▶ Domestic piping & sanitary installation on 2nd & 3rd Level Areas A, F & G in progress
- ▶ Spray-on-fireproofing in progress
- ▶ 1925 sandstone emblem installed in brick veneer in Area A west elevation

Upcoming Project Milestones:

- ▶ Roofing insulation on Area D roof week of 8/15
- ▶ Glazing Area A west elevation to start 8/15
- ▶ Skylights Area B to start 8/15

Construction Key Plan:





Area A Brick Veneer



Area F Brick Veneer



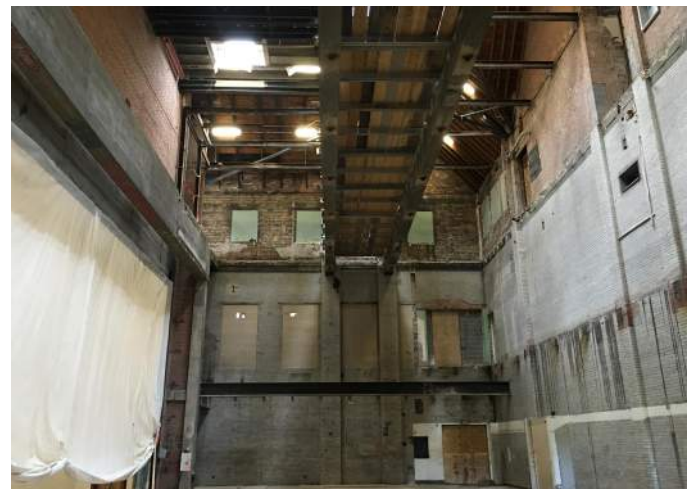
Courtyard Wood Window Replacement



Area B Spray Foam & Area C Masonry



Area G Art Level Interior Metal Stud Framing



Area G Auditorium Structural Steel Demo Complete

